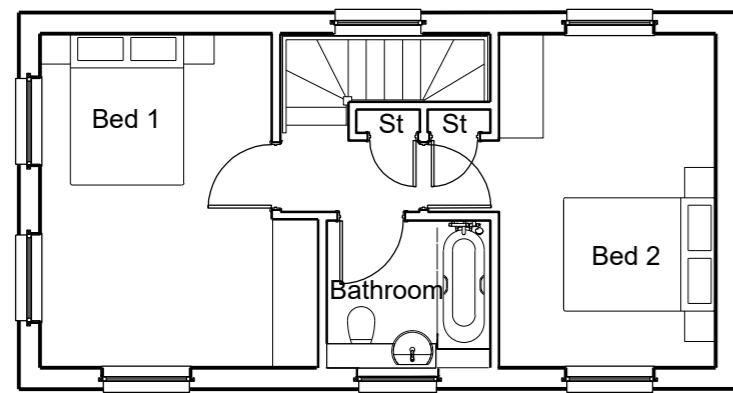


This drawing is the copyright of Roberts Limbrick Ltd and should not be reproduced in whole or in part or used in any manner whatsoever without their written permission.

Do Not scale off this drawing, use only figured dimensions and report any discrepancies or omissions to the Architect immediately.

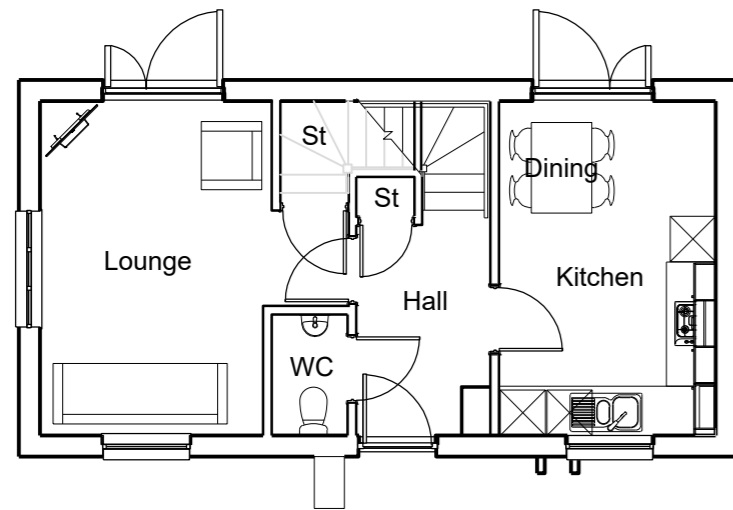
rev.	date	description
-	-	-



FIRST FLOOR PLAN



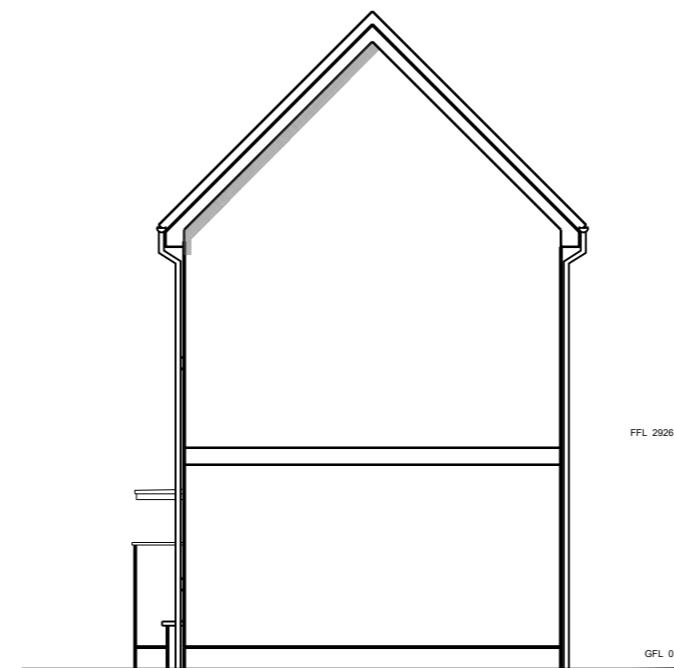
FRONT ELEVATION T1



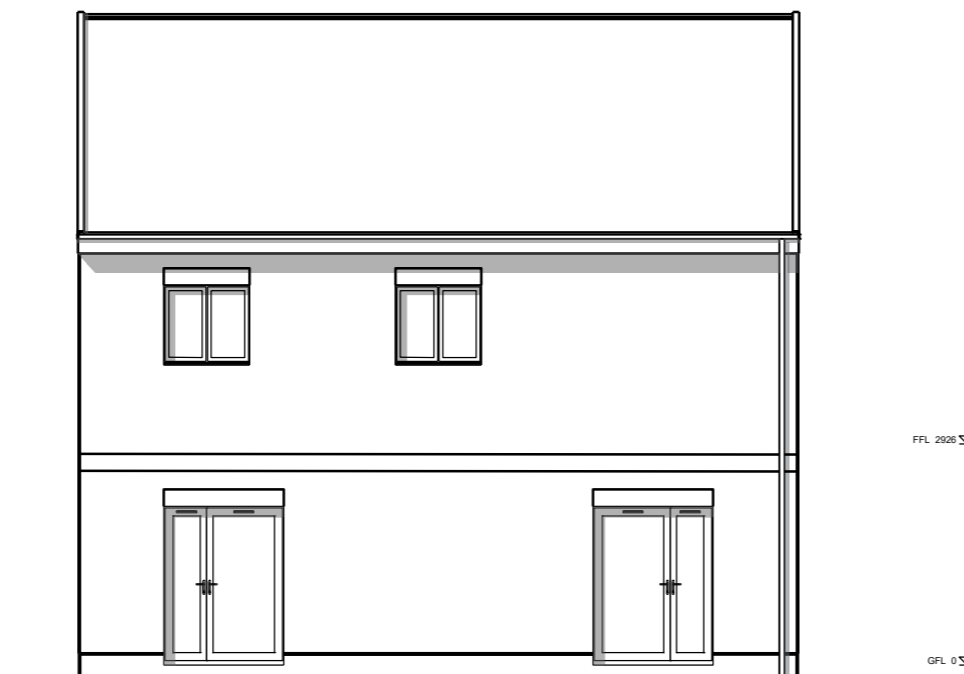
GROUND FLOOR PLAN



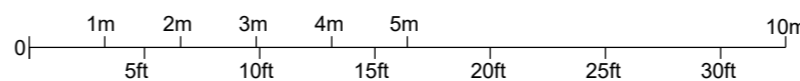
SIDE ELEVATION



SIDE ELEVATION



REAR ELEVATION



PLOTS

As Drawn: 48

Handed:

MATERIALS LEGEND

- Roof Tiles - 30 degree roof pitch - Marley Modern Interlocking Concrete Tiles
- Roof Tiles - 12.5 degree roof pitch - Metrotile Slate .900
- Lightweight Steel Roofing - Terracotta

Brick Units

- Main Brick GF - Red Multi Brick
- Main Brick FF/SF - Red Multi, Buff of Brown Brick
- Brick Detail & Banding - Red Multi or Buff Brick

Render units

- Main Render - EPSITECH Render (0505B206).
- Brick Detail & Banding - Red Multi

- Window Surrounds - Grey Aluminum or similar
- Brick below DPC - Red Multi Brick

- Rainwater Goods - Black uPVC
- Front Doors - Vista Panels Verona style, colour: mixed colours - Olive Green, Navy Blue, Maroon Red etc
- Window & Door Frames - Grey uPVC
- Front Door Canopies - Flat GRP Dark Grey
- Soffit & Fascia - Grey uPVC

Refer to Materials Plan for details



project

RESIDENTIAL DEVELOPMENT
FOSSETTS WAY
SOUTHEND-ON-SEA

client

ILKE HOMES

drawing

HOUSETYPE - CARDINHAM T1
PLANS & ELEVATIONS

status

PLANNING

ROBERTS LIMBRICK LTD

The Carriage Building, Bruton Way,
Gloucester, GL1 1DG

The Estates Office, 25 - 26 Gold Tops,
Newport, NP20 4PG

T. 03333 405 500

mail@robertslimbrick.com

www.robertslimbrick.com

Registered Office : England No. 06658029

scale

1/100 @ A2

date

26/03/21

author

RJ

project	drg no.	rev.
9913	PL20	-